

# HOTEL PALLADIUM

Collaboration  
Spaces  
for Meetings  
& Events

PALLADIUM  
PALMA HOTEL

## Welcome to Hotel Palladium's meetings and training center

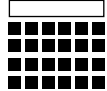
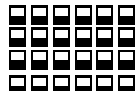
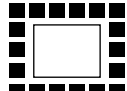
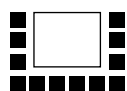
Located in a modern hotel in Palma's city Center with an easy-to-reach regular Aerobus link from the airport right to the hotel's front door, the venue offers the most comprehensive and technically advanced collaboration spaces in the area.

Covering a complete range of collaboration services, from huddle spaces through boardrooms to complete fully-fledged event Rooms, it has become a great opportunity for individuals, groups and entrepreneurs to carry out events & group activities or easily set up a simple collaboration space and meet: It no longer matters whether all participants can attend on-site or not, since the included NetPalladium™ service will effortlessly bring the missing ones into the meeting space.



# Rooms

## DISTRIBUTION OPTIONS

ROOM	Theater 	School 	Imperial 	U-Shaped 
ROOM 1	22 PERS	12 + 1 PERS	12 PERS	12 PERS
ROOM 2	20 PERS	12 + 1 PERS	12 PERS	12 PERS
ROOM 1+2	50 PERS	27 + 1 PERS	26 PERS	23 PERS
BOARDROOM	-	-	8 PERS	-

## SIZES & DIMENSIONS

ROOM	WIDTH	LENGTH	SURFACE	HEIGHT
ROOM 1	6 m	5 m	30 m <sup>2</sup>	2,70 m
ROOM 2	5 m	5 m	25 m <sup>2</sup>	2,70 m
ROOM 1+2	6 m	10 m	55 m <sup>2</sup>	2,70 m
BOARDROOM	3 m	5,5 m	16,5 m <sup>2</sup>	2,40 m

# Room 1



# Room 1 + 2



# Room 2



# Boardroom



## The WYSIWYG effect: what's included is **100%** fully-operational



- 75" LED-TV profesional screen monitor, floor-stand mounted and wheeled for easy placement



- exclusive & isolated Internet Access for the meeting spaces: wireless as well as Ethernet (500 Mb/s symmetrical)

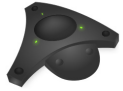


- AppleTV supporting airplay for mirroring user's devices into the screen (password protected)



- Bose portable & directional speaker to support quick-setup presentations





- Professional DECT portable hands-free group-audio equipment including satellite mics both to receive direct incoming calls (no need for PBX switching) or direct dial-out



- Basic connectors adapter-kit cabling to support presentations gadgetry: HDMI, USB-C, Display Port, VGA, DVI, Thunderbolt



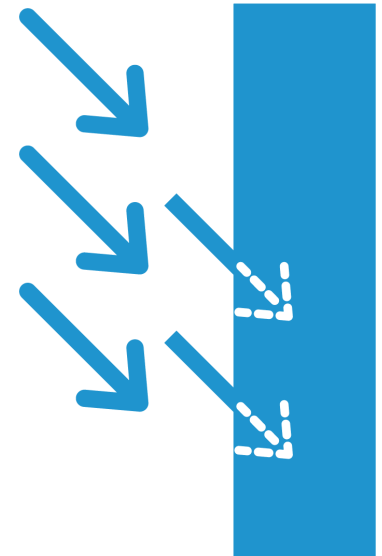
- Presenter's enabled microphone and in-room ceiling-embedded speakers



- First-class on-site technical support:
  - finally a 100% hassle-free meeting space
  - Our A/V tech-team will help users during both phases: the room setting-up and the event

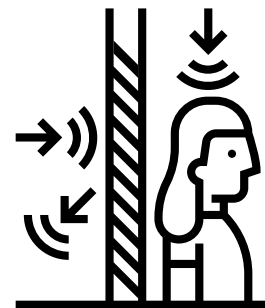
## Room-acoustics conditioning (\*)

- meeting spaces' in-wall embedded acoustic panels help minimize room's reverberation time
- conversation among participants now flows easily and quieter: users don't need to raise their voices to be understood
- enhanced speech intelligibility provides a huge leap in users' concentration during meetings
- allows for quieter discussions to happen while better supporting simultaneous conversations



## Active Sound masking® technology: (\*)

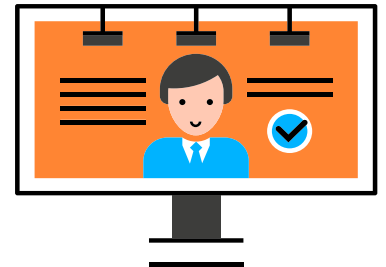
- Sound Masking is a specifically tuned ambient background sound that targets the same frequencies as human speech, reducing its intelligibility
- The system disperses a pre-tuned sound masking signal directly into the spaces, resulting in a consistent and comfortable ambient sound through both areas
- By adding sound masking into adjoining meeting rooms, conversations coming from either room become almost unintelligible, barely noticeable and less distracting in the other room
- Both collaboration spaces become more comfortable, private, and productive.
- *“When you can’t understand what someone is saying, their words become less distracting”*



**NetPalladium service:** the new sponsored service for corporate customers.



- All our meeting spaces include the new NetPalladium service
- Hotel Palladium Teletransports your attendees and guests in Full-HD quality
- Includes on-site professional Telepresence Hardware as well as the service to the remote end
- Compatible with Skype for Business, Office 365, Webex & Webex Teams, Zoom with URI support, ISDN support
- Ideally suited for all attendees who finally cannot make it into the meeting, no matter what device they use (iPad, PC, Mac...)
- Bring your remote attendees live into the meeting room
- Supports simultaneous live presentation & presenter viewing
- Optionally the event may be recorded for later viewing and/or formatting for distribution





- Basic stationary: Flipchart, Folders, Paper sheets and pens



- Separate ventilation ducts for continuous air renewal



- Individually controlled Air conditioning (summer) & Heat system (winter)



- Coffee-Breaks, Meeting menus and Finger food options available, including in-room coffee machine



- All rooms may be used on different time-frame basis:
  - per-day
  - part-time
  - per hour



- Take our FMB (Frequent Meeter Bundle) package to use any room at your convenience upon request